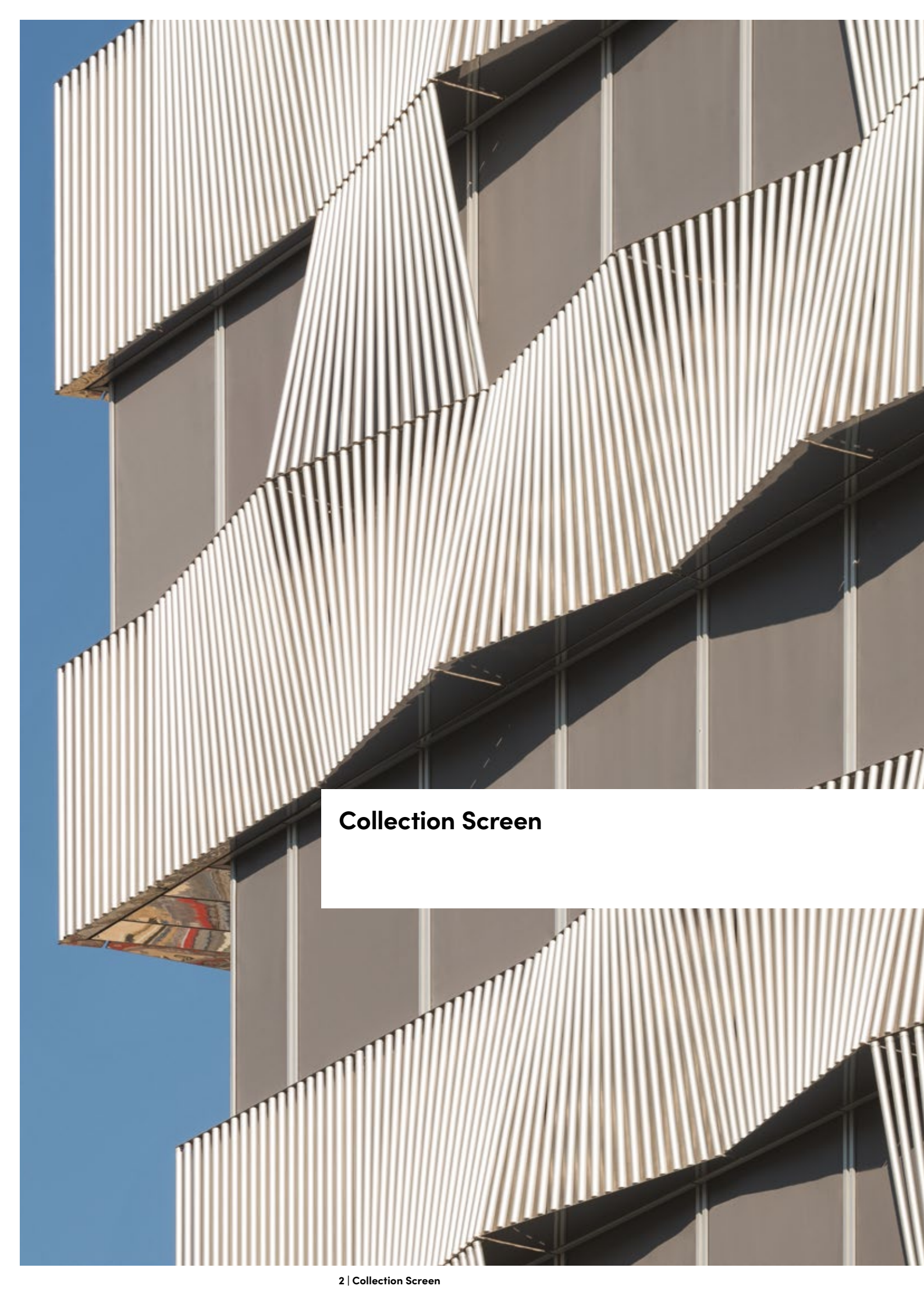


Collection Screen.
Automatisch gut.





Collection Screen

Classic Satiné 5500

MONTANA



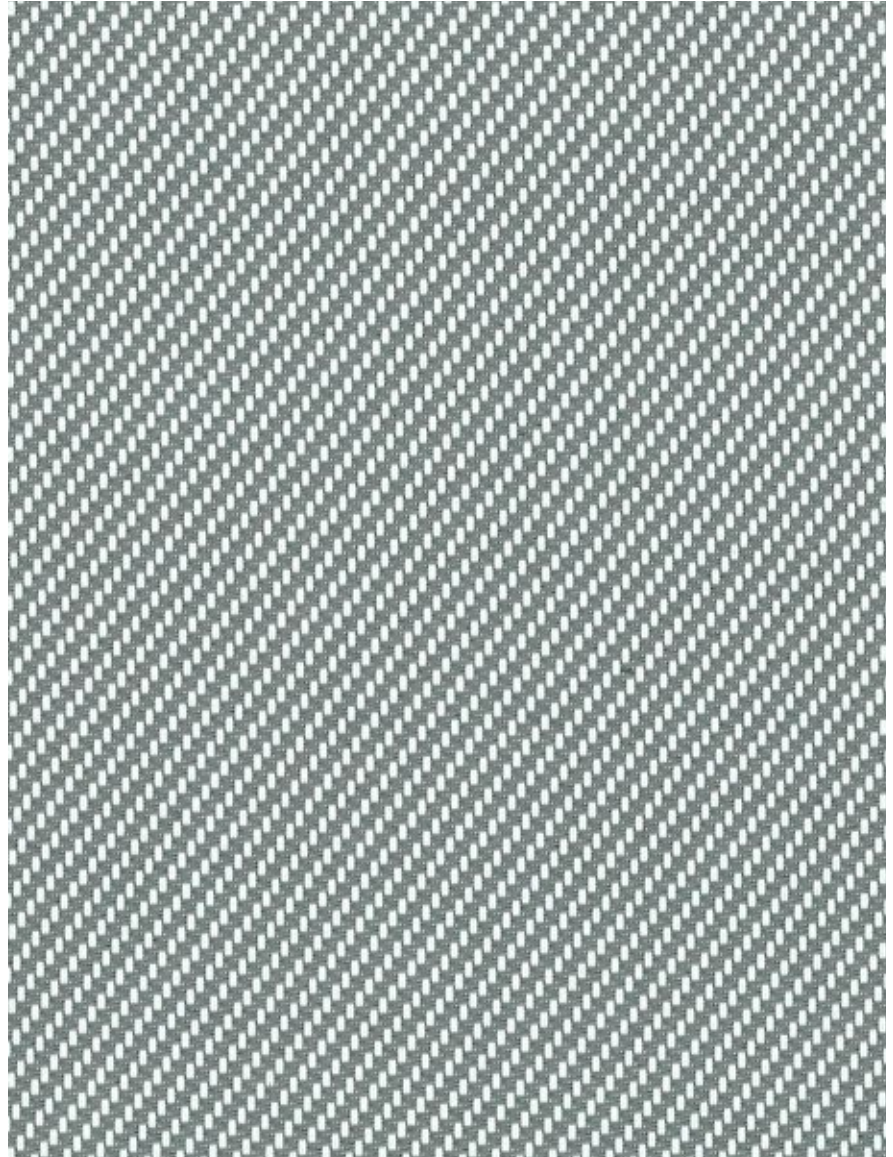
ETNA



SAHARA



BORA BORA



Montana - 0201 Blanc Gris

STOFFEMPFEHLUNG FÜR ZWECKBAU

Aus Hitzeschutzgründen muss der g-Wert $\leq 10\%$ sein

Damit der Blendschutz gewährleistet ist muss die Transparenz $\leq 5\%$ sein.

Die Lichttransmission muss $\geq 5\%$ sein damit man eine optimale Tageslichtnutzung hat.

Um den denkbar besten thermischen Schutz zu erzielen, sollten Sie einen Stoff wählen, der eine möglichst niedrige Wärmedurchlässigkeit (T_e) aufweist, und eher eine dunkle Farbe.



Classic Satiné 5500 : Montana



0202 Blanc



(A)

0207 Blanc Perle



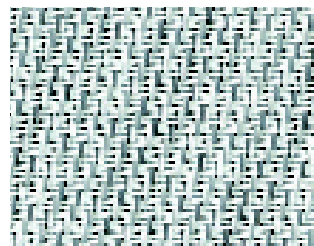
(B)



(A)

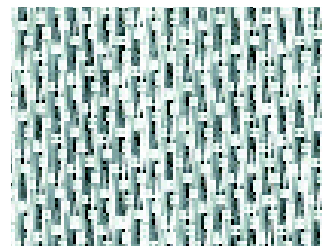
M36 020207 Blanc Blanc Perle

(B)

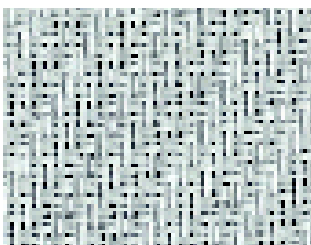


(A)

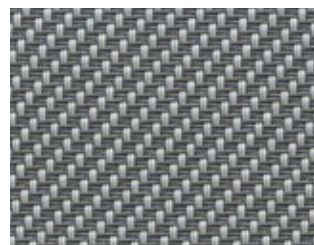
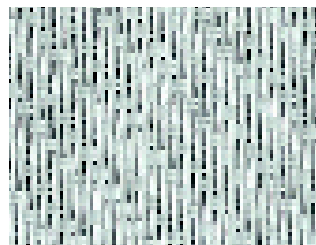
0702 Perle Blanc



(B)



0707 Perle

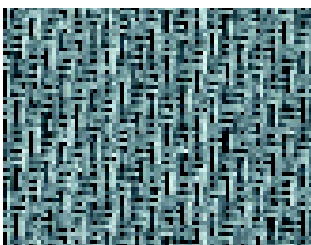


(A)

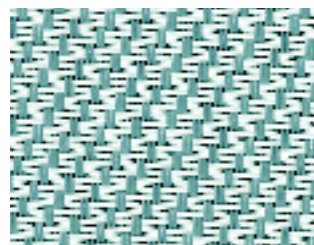
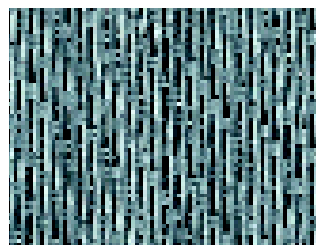
0701 Perle Gris



(B)

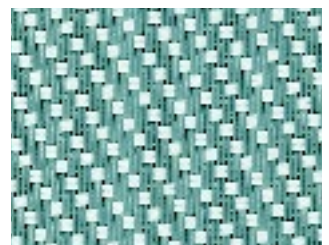


0101 Gris

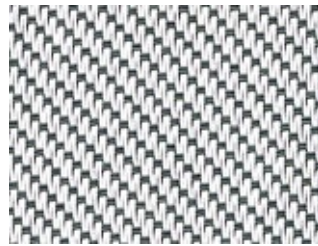
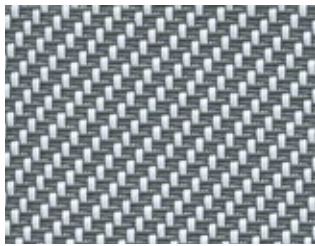


(A)

0102 Gris Blanc



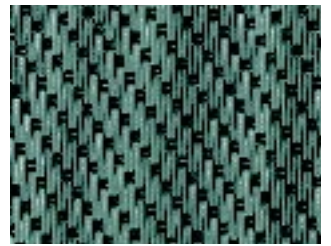
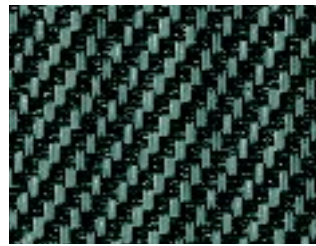
(B)



(A)

0201 Blanc Gris

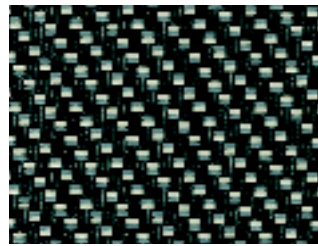
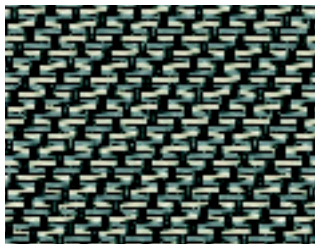
(B)



(A)

0130 Gris Charcoal

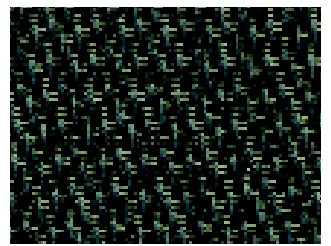
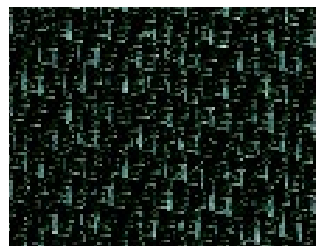
(B)



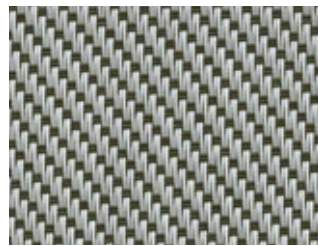
(A)

M38 300120 Charcoal Gris Lin

(B)



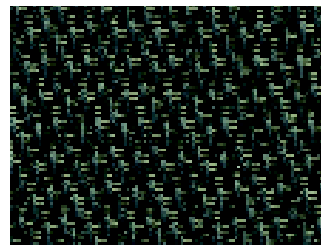
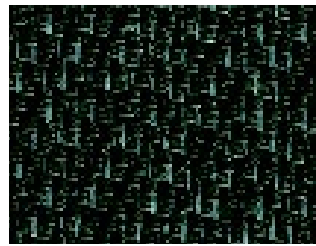
3030 Charcoal



(A)

0706 Perle Bronze

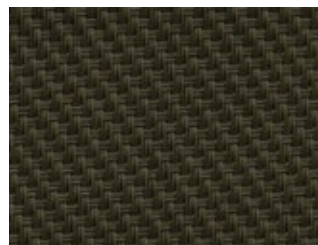
(B)



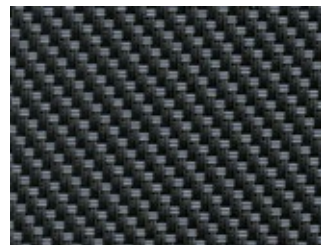
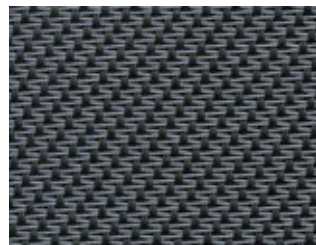
(A)

3006 Charcoal Bronze

(B)



0606 Bronze



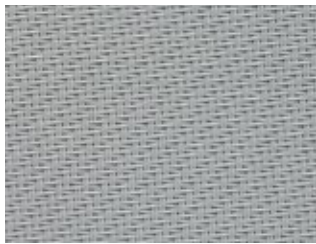
(A)

3001 Charcoal Gris

(B)

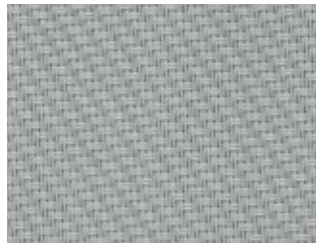


Classic Satiné 5500 : Montana

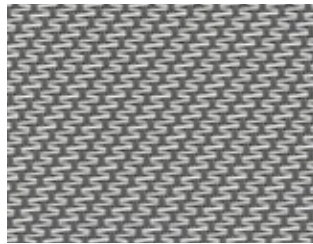


(A)

4949 RAL 9006

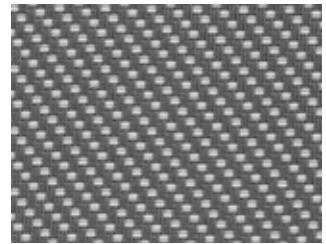


(B)

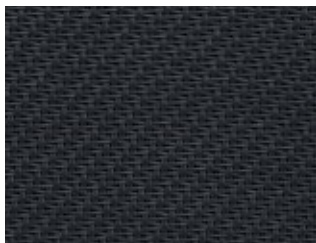


(A)

M31 010207 Gris Blanc Perle

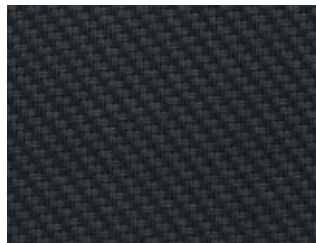


(B)

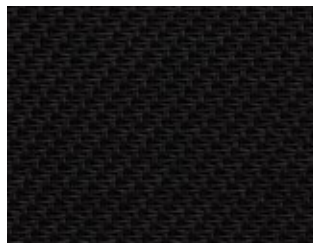


(A)

5959 RAL 7016

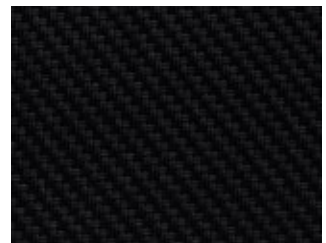


(B)



(A)

6060 RAL 9005



(B)

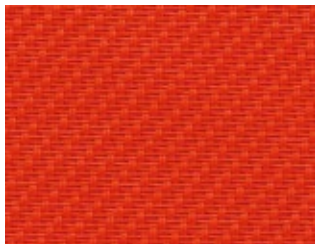




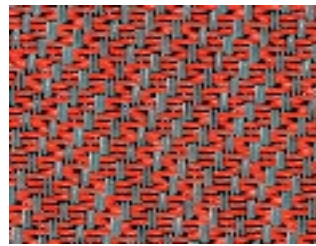
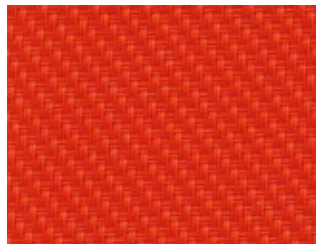




Classic Satiné 5500 : Etna

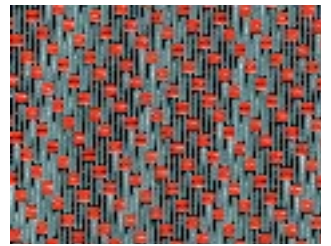


0909 Mandarine



(A)

0109 Gris Mandarine

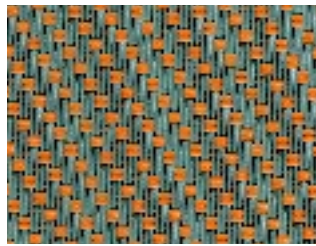


(B)



(A)

0108 Gris Or



(B)



(A)

M65 100508 Sable Canari Or

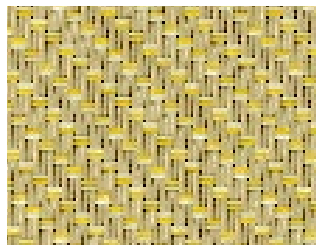


(B)

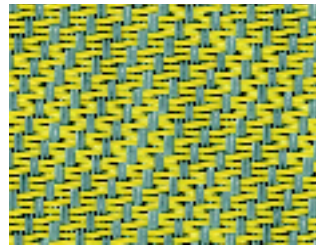


(A)

M64 100520 Sable Canari Lin

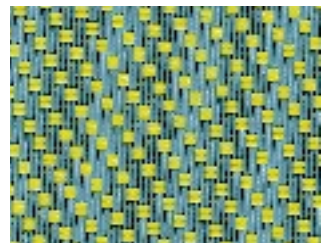


(B)

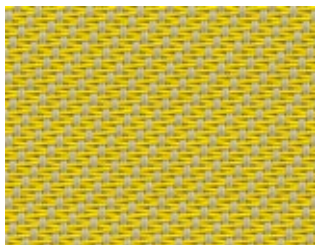


(A)

0105 Gris Canari

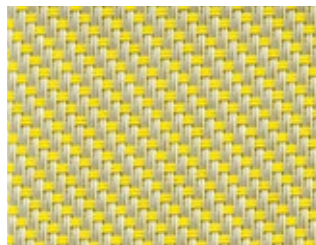


(B)

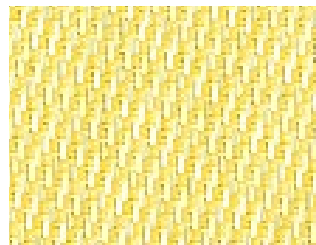


(A)

0705 Perle Canari

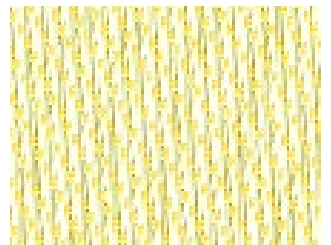


(B)

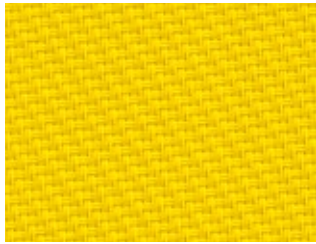
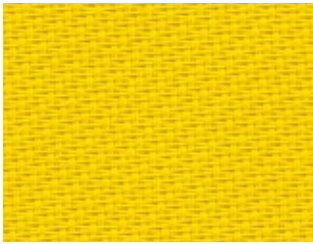


(A)

0205 Blanc Canari



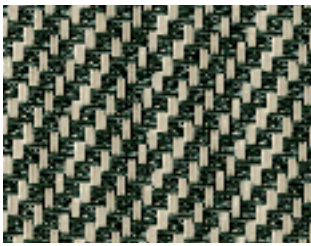
(B)



0505 Canari

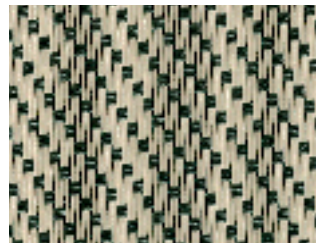


Classic Satiné 5500 : Sahara

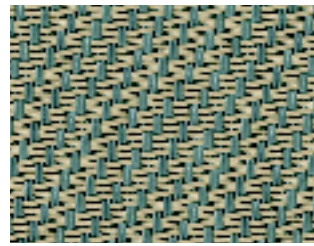


(A)

1006 Sable Bronze



(B)



(A)

0110 Gris Sable



(B)

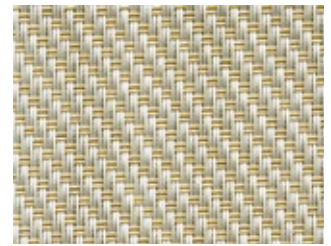


1010 Sable

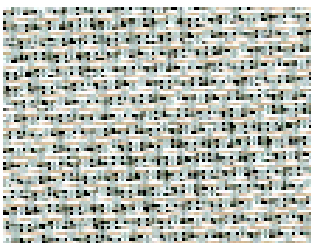


(A)

0710 Perle Sable

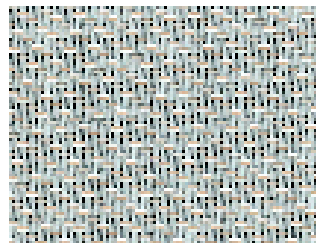


(B)



(A)

M45 070210 Perle Blanc Sable



(B)



(A)

M37 200710 Lin Perle Sable

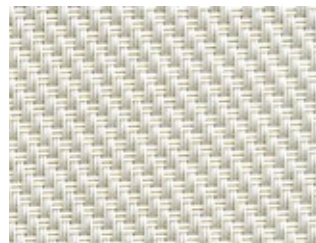


(B)



(A)

0720 Perle Lin



(B)

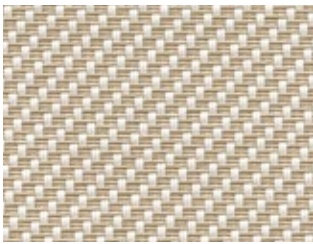
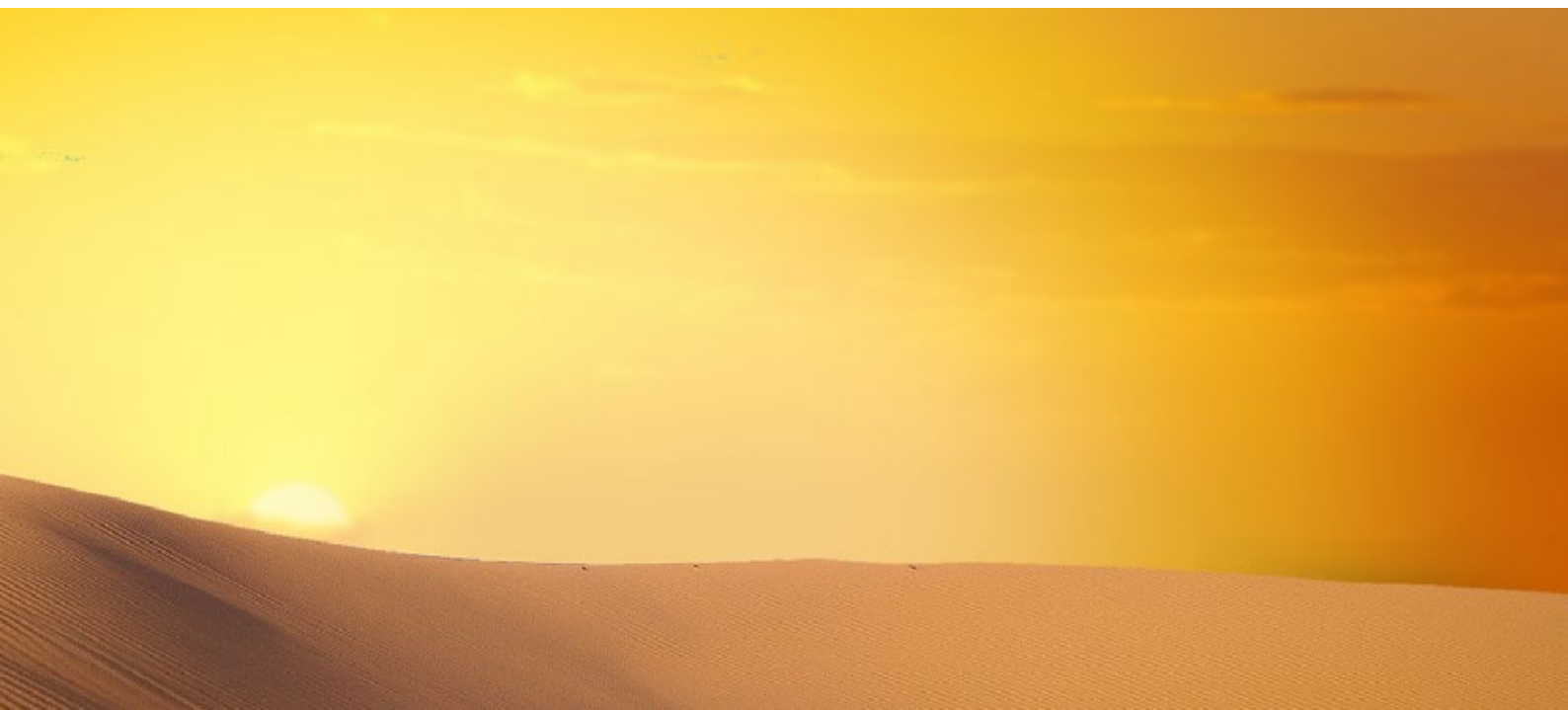


(A)

1002 Sable Blanc



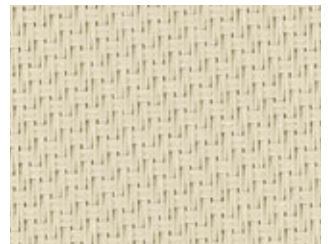
(B)



(A)

0210 Blanc Sable

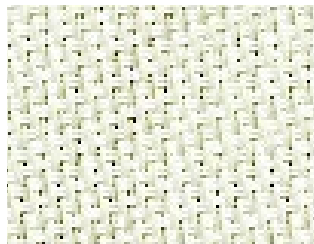
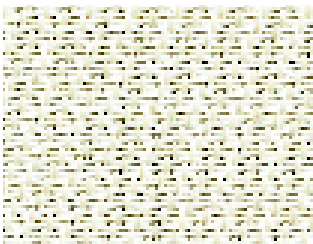
(B)



(A)

2020 Lin

(B)



(A)

2002 Lin Blanc

(B)



(A)

1001 Sable Gris

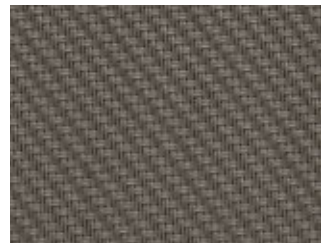
(B)



(A)

2001 Lin Gris

(B)



(A)

1111 RAL 7048

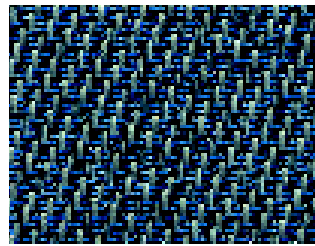
(B)



Classic Satiné 5500 : Bora Bora

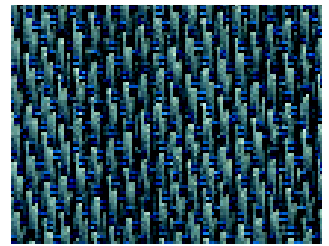


4040 Outremer



(A)

0140 Gris Outremer

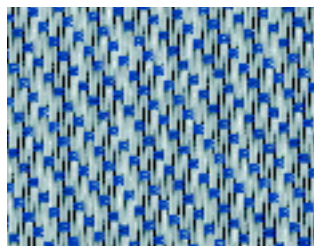


(B)

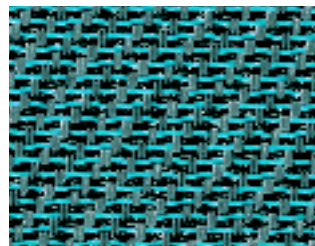


(A)

0740 Perle Outremer

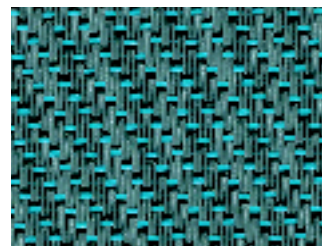


(B)

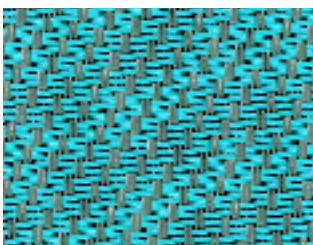


(A)

M01 010330 Gris Turquoise Charcoal



(B)

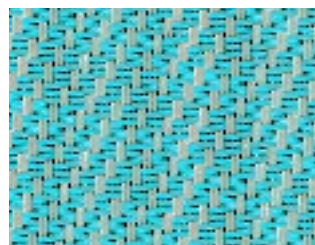


(A)

0103 Gris Turquoise



(B)

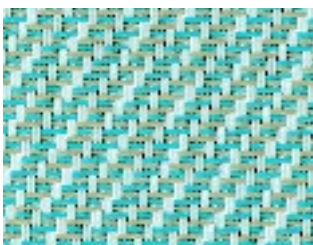


(A)

0703 Perle Turquoise



(B)

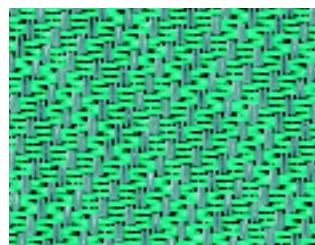


(A)

M02 020310 Blanc Turquoise Sable

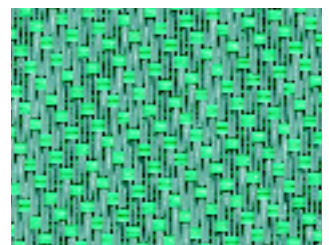


(B)

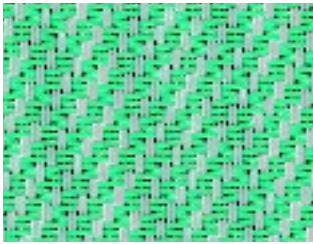
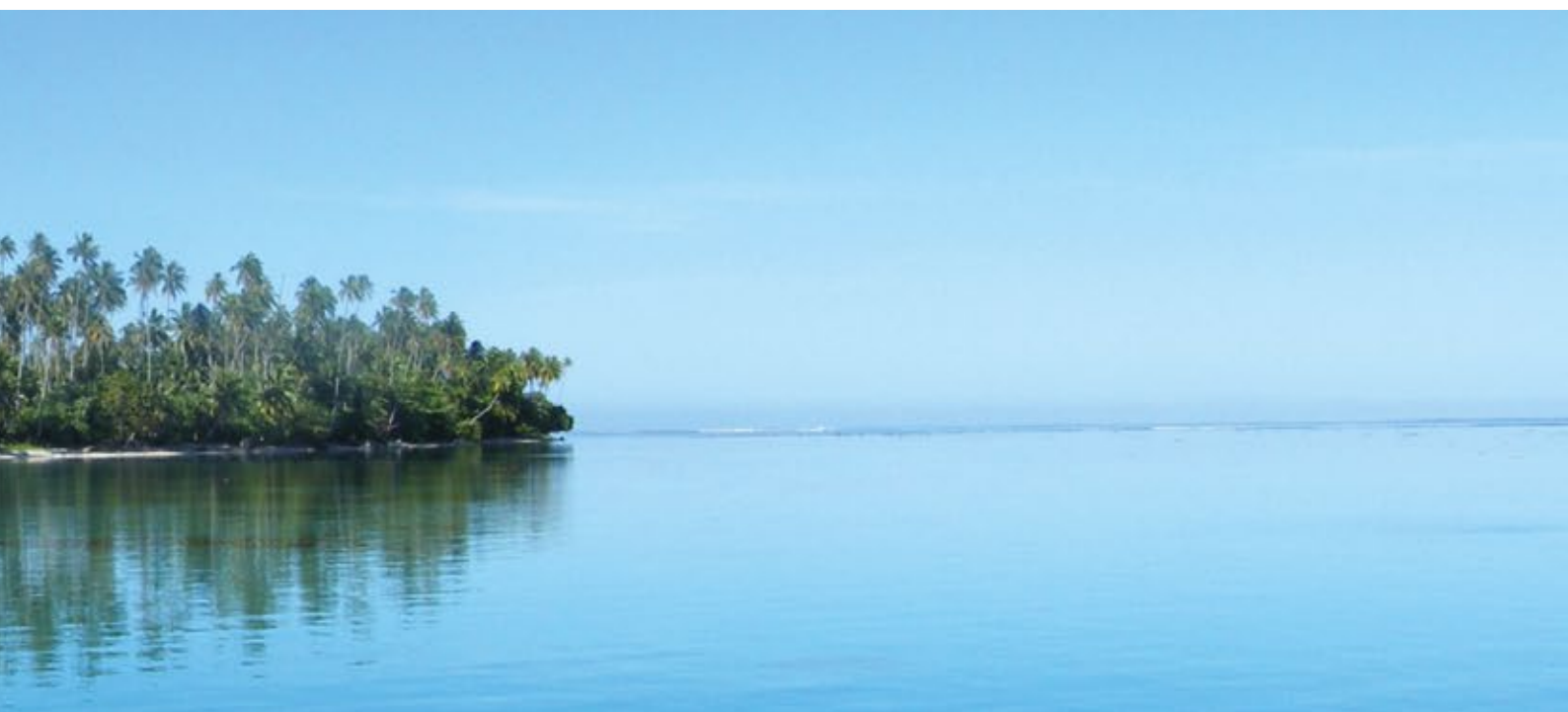


(A)

0150 Gris Vert

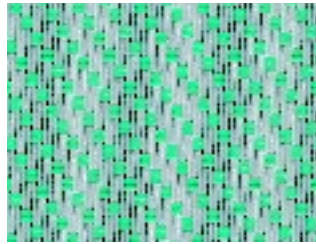


(B)



(A)

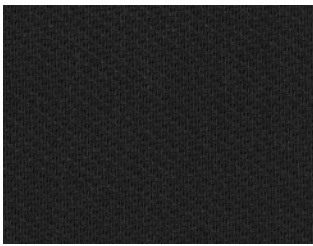
0750 Perle Vert



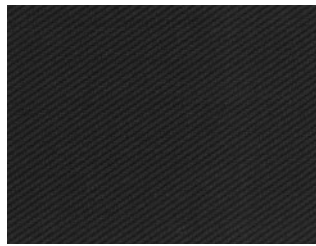
(B)



Classic Satiné 5501

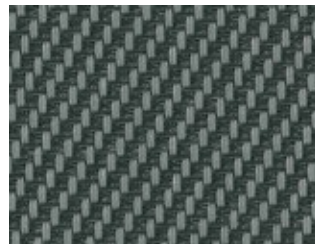


(A)



(B)

3030

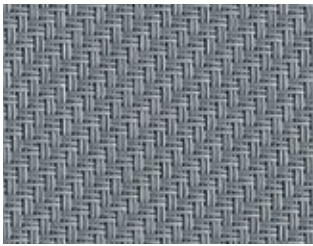


(A)



(B)

0130

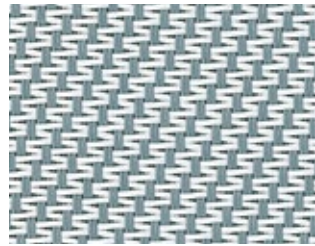


(A)

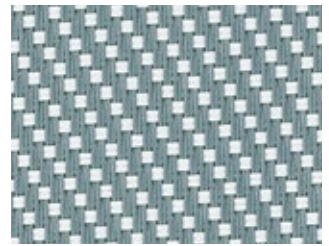


(B)

0101

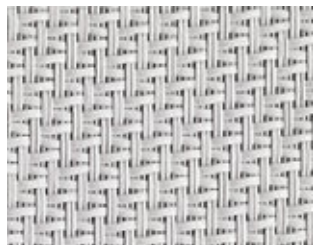


(A)

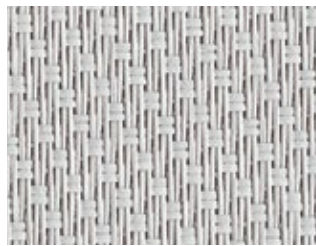


(B)

0102

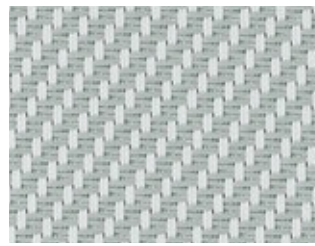


(A)



(B)

0707



(A)

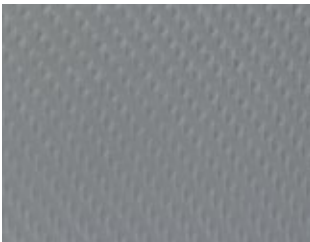


(B)

0207



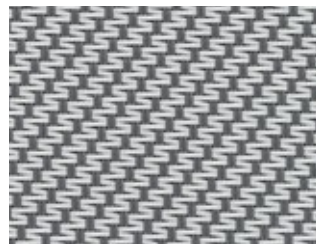
Satiné 21154*



Reverse side



0101



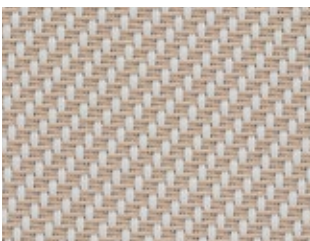
0102



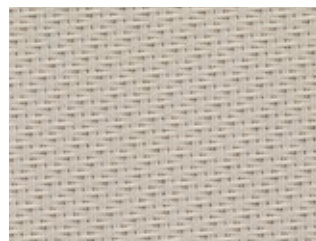
0202



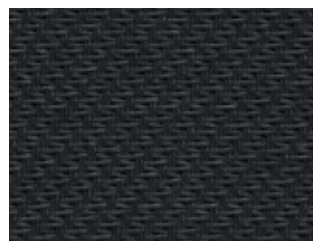
0707



0210



2020



3030

*Tuch nur im EU-Raum verfügbar.

Classic Satiné 5500

Brandschutzklasse M1 B1 C-s3 d0

Gewicht/m² 0,52kg

Dicke 0,75mm

Montana

		T _e	R _e	A _e	T _v	g-tot _e	g-tot _i
0202 Blanc		0.21	0.66	0.13	0.21	0.09	0.15
0207 Blanc Perle	A	0.17	0.50	0.33	0.16	0.08	0.20
	B	0.17	0.55	0.28	0.16	0.08	0.17
M36 020207 Blanc Blanc Perle	A	0.19	0.57	0.24	0.18	0.08	0.17
	B	0.19	0.60	0.21	0.18	0.08	0.16
0702 Perle Blanc	A	0.17	0.50	0.33	0.16	0.08	0.20
	B	0.17	0.45	0.38	0.16	0.08	0.21
0707 Perle		0.14	0.38	0.48	0.13	0.07	0.23
0701 Perle Gris	A	0.11	0.27	0.62	0.09	0.06	0.26
	B	0.11	0.31	0.58	0.09	0.06	0.25
0101 Gris		0.08	0.20	0.72	0.07	0.05	0.28
0102 Gris Blanc	A	0.10	0.40	0.50	0.07	0.04	0.22
	B	0.10	0.31	0.59	0.07	0.05	0.25
0201 Blanc Gris	A	0.12	0.37	0.51	0.10	0.06	0.23
	B	0.11	0.48	0.41	0.09	0.05	0.19
0130 Gris Charcoal	A	0.05	0.12	0.83	0.05	0.05	0.30
	B	0.06	0.15	0.79	0.05	0.05	0.29

		T _e	R _e	A _e	T _v	g-tot _e	g-tot _i
M38 300120 Charcoal Gris Lin	A	0.06	0.19	0.75	0.05	0.05	0.28
	B	0.06	0.13	0.81	0.06	0.05	0.29
3030 Charcoal		0.04	0.06	0.90	0.04	0.04	0.31
0706 Perle Bronze	A	0.08	0.18	0.74	0.08	0.05	0.27
	B	0.08	0.25	0.67	0.07	0.05	0.26
3006 Charcoal Bronze	A	0.04	0.07	0.89	0.04	0.04	0.30
	B	0.04	0.07	0.89	0.04	0.04	0.31
0606 Bronze		0.05	0.07	0.88	0.05	0.05	0.31
3001 Charcoal Gris	A	0.05	0.13	0.82	0.05	0.04	0.29
	B	0.05	0.10	0.85	0.05	0.04	0.30
4949 RAL 9006	A	0.11	0.37	0.52	0.10	0.05	0.22
	B	0.11	0.37	0.52	0.08	0.04	0.25
M31 010207 Gris Blanc Perle	A	0.10	0.34	0.56	0.08	0.06	0.25
	B	0.10	0.28	0.62	0.04	0.04	0.30
5959 RAL 7016	A	0.04	0.07	0.89	0.04	0.04	0.31
	B	0.04	0.07	0.89	0.04	0.05	0.55
6060 RAL 9005	A	0.04	0.04	0.92	0.04	0.05	0.56
	B	0.04	0.04	0.92	0.04	0.05	0.56

Etna

		T _e	R _e	A _e	T _v	g-tot _e	g-tot _i
0909 Mandarine		0.18	0.44	0.38	0.07	0.07	0.24
0109 Gris Mandarine	A	0.09	0.30	0.61	0.05	0.05	0.27
	B	0.09	0.26	0.65	0.05	0.05	0.27
0108 Gris Or	A	0.10	0.32	0.58	0.07	0.05	0.27
	B	0.11	0.26	0.63	0.07	0.06	0.27
M65 100508 Sable Canari Or	A	0.15	0.43	0.42	0.11	0.07	0.23
	B	0.15	0.42	0.43	0.11	0.07	0.23
M64 100520 Sable Canari Lin	A	0.16	0.45	0.39	0.12	0.07	0.22
	B	0.16	0.43	0.41	0.12	0.07	0.23

		T _e	R _e	A _e	T _v	g-tot _e	g-tot _i
0105 Gris Canari	A	0.10	0.33	0.57	0.07	0.04	0.25
	B	0.09	0.28	0.63	0.07	0.05	0.27
0705 Perle Canari	A	0.16	0.42	0.42	0.15	0.07	0.23
	B	0.16	0.40	0.44	0.15	0.08	0.24
0205 Blanc Canari	A	0.19	0.58	0.23	0.18	0.08	0.18
	B	0.19	0.61	0.20	0.17	0.07	0.17
0505 Canari		0.20	0.51	0.29	0.17	0.08	0.21

Bora Bora

		T _e	R _e	A _e	T _v	g-tot _e	g-tot _i
4040 Outremer		0.14	0.25	0.61	0.05	0.05	0.30
0140 Gris Outremer	A	0.08	0.22	0.70	0.05	0.05	0.30
	B	0.08	0.21	0.71	0.05	0.05	0.29
0740 Perle Outremer	A	0.13	0.28	0.59	0.08	0.06	0.28
	B	0.13	0.31	0.56	0.07	0.06	0.26
M01 010330 Gris Turq. Charcoal	A	0.08	0.20	0.72	0.06	0.05	0.28
	B	0.08	0.20	0.72	0.06	0.05	0.28
0103 Gris Turquoise	A	0.09	0.30	0.61	0.06	0.05	0.27
	B	0.09	0.26	0.65	0.06	0.05	0.27

		T _e	R _e	A _e	T _v	g-tot _e	g-tot _i
0703 Perle Turquoise	A	0.13	0.38	0.49	0.10	0.06	0.23
	B	0.14	0.38	0.48	0.09	0.06	0.23
M02 020310 Blanc Turq. Sable	A	0.17	0.49	0.34	0.13	0.08	0.20
	B	0.17	0.55	0.28	0.13	0.07	0.19
0150 Gris Vert	A	0.09	0.26	0.65	0.06	0.05	0.27
	B	0.09	0.23	0.68	0.06	0.05	0.28
0750 Perle Vert	A	0.14	0.33	0.53	0.11	0.06	0.25
	B	0.14	0.34	0.52	0.11	0.06	0.24

Classic Satiné 5500

Brandschutzklasse M1 B1 C-s3 d0

Gewicht/m² 0,52kg

Dicke 0,75mm

Sahara

		T _e	R _e	A _e	T _v	g-tot _e	g-tot _i
1006	A	0.08	0.18	0.74	0.07	0.05	0.28
Sable Bronze	B	0.08	0.26	0.66	0.07	0.05	0.26
0110	A	0.09	0.29	0.62	0.07	0.05	0.26
Gris Sable	B	0.10	0.25	0.65	0.07	0.05	0.27
1010		0.13	0.39	0.48	0.10	0.06	0.23
Sable							
0710	A	0.14	0.38	0.48	0.12	0.07	0.23
Perle Sable	B	0.14	0.37	0.49	0.12	0.07	0.23
M45 070210	A	0.15	0.43	0.42	0.14	0.07	0.22
Perle Blanc Sable	B	0.15	0.41	0.44	0.14	0.07	0.22
M37 200710	A	0.16	0.45	0.39	0.14	0.07	0.21
Lin Perle Sable	B	0.16	0.48	0.36	0.14	0.07	0.20
0720	A	0.17	0.41	0.42	0.15	0.08	0.22
Perle Lin	B	0.17	0.41	0.42	0.15	0.08	0.22

		T _e	R _e	A _e	T _v	g-tot _e	g-tot _i
1002	A	0.16	0.51	0.33	0.13	0.07	0.19
Sable Blanc	B	0.16	0.46	0.38	0.13	0.07	0.21
0210	A	0.17	0.50	0.33	0.15	0.08	0.2
Blanc Sable	B	0.17	0.55	0.28	0.14	0.08	0.18
2020		0.18	0.53	0.29	0.16	0.08	0.19
Lin							
2002	A	0.20	0.58	0.22	0.18	0.08	0.17
Lin Blanc	B	0.20	0.56	0.24	0.18	0.09	0.18
1001	A	0.10	0.28	0.62	0.08	0.06	0.26
Sable Gris	B	0.10	0.33	0.57	0.08	0.05	0.25
2001	A	0.12	0.32	0.56	0.09	0.06	0.25
Lin Gris	B	0.11	0.40	0.49	0.09	0.05	0.23
1111		0.05	0.17	0.78	0.05	0.05	0.29
RAL 7048							

Classic Satiné 5501

Brandschutzklasse M1 B1

Gewicht/m² 0,45kg

Dicke 0,55mm

	T _e	R _e	A _e	T _v	g-tot _e
0101	0.05	0.20	0.75	0.03	0.00
0102	0.06	0.32	0.62	0.03	0.10
0130	0.04	0.15	0.81	0.03	0.00

	T _e	R _e	A _e	T _v	g-tot _e
0207	0.15	0.59	0.26	0.13	0.10
0707	0.10	0.39	0.51	0.09	0.10
3030	0.02	0.06	0.92	0.02	0.00

Satiné 21154

Brandschutzklasse M1

Gewicht/m² 0,66kg

Dicke 0,75mm

	T _e	R _e	A _e	T _v	g-tot _e
0101	0.00	0.21	0.79	0.00	0.03
0102	0.00	0.42	0.58	0.00	0.02
0202	0.00	0.69	0.31	0.00	0.01
0210	0.00	0.53	0.47	0.00	0.02

	T _e	R _e	A _e	T _v	g-tot _e
0707	0.00	0.39	0.61	0.00	0.02
2020	0.00	0.55	0.45	0.00	0.02
3030	0.00	0.06	0.94	0.00	0.03
Reverse side	0.00	0.34	0.66	0.00	0.02

A_e Strahlungsabsorptionsfaktor

R_e Reflexionskoeffizient Sonnenspektrum

T_e Transmissionskoeffizient Sonnenspektrum

T_v Transmissionskoeffizient sichtbares Spektrum

g-tot_e Gesamtenergiedurchlassgrad für «geschlossenen» aussenliegenden Sonnenschutz mit Verglasung, Berechnung nach SN EN 13363-1-A1, Referenzverglasung C gemäss EN 14501, g=0.59, U=1.20 [W/m²K]

g-tot_i g-Wert innen - Referenzverglasung C gemäss EN 14501, g=0.59, U=1.20 [W/m²K]



www.griessergroup.com

